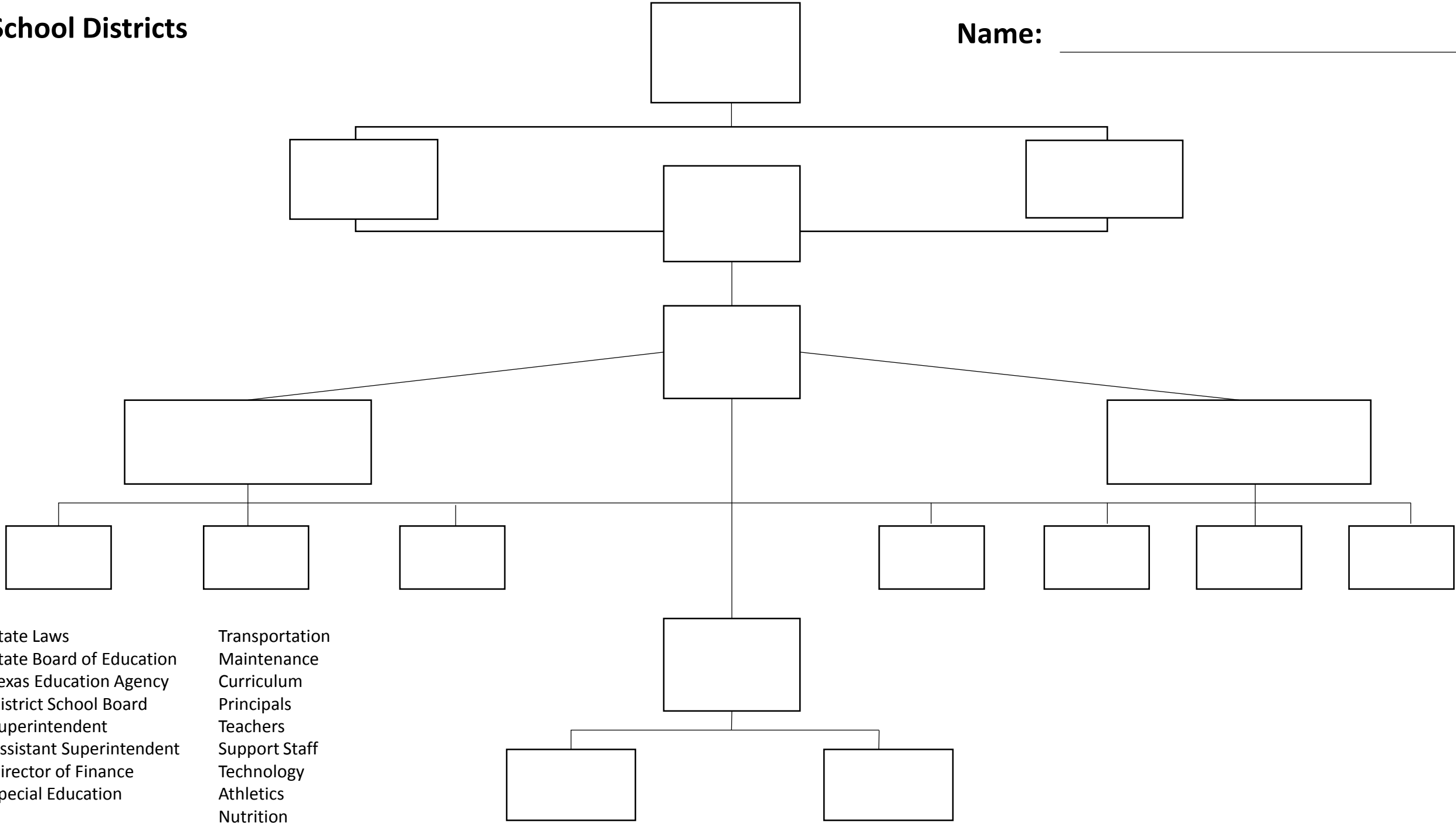


# School Districts

Name: \_\_\_\_\_

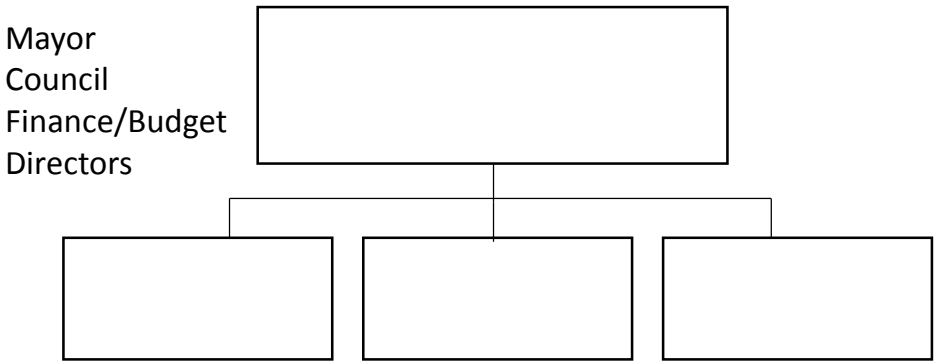


State Laws  
State Board of Education  
Texas Education Agency  
District School Board  
Superintendent  
Assistant Superintendent  
Director of Finance  
Special Education

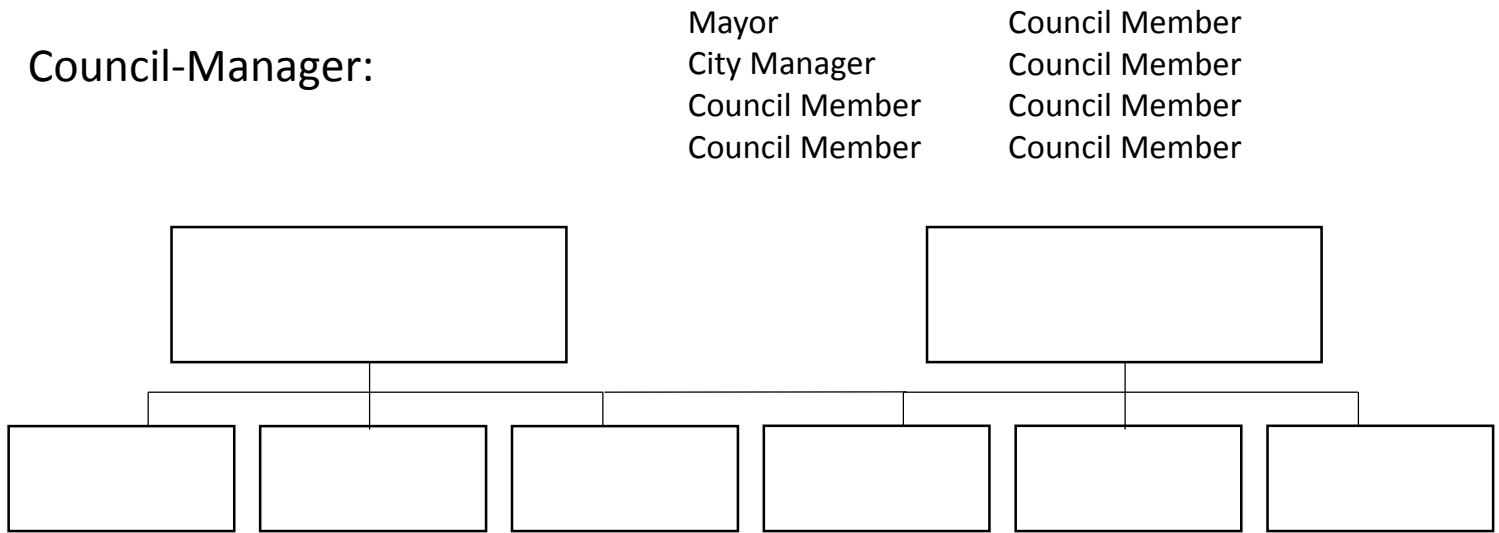
Transportation  
Maintenance  
Curriculum  
Principals  
Teachers  
Support Staff  
Technology  
Athletics  
Nutrition

# Local Governments

## Strong Mayor:



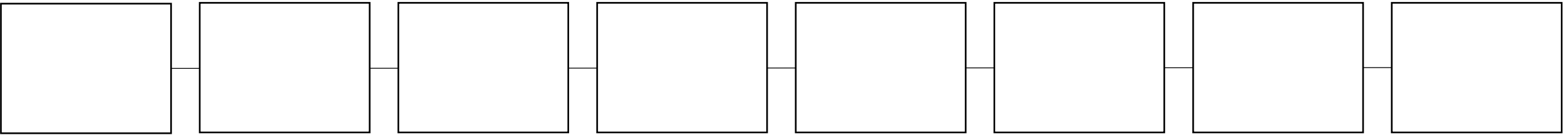
## Council-Manager:



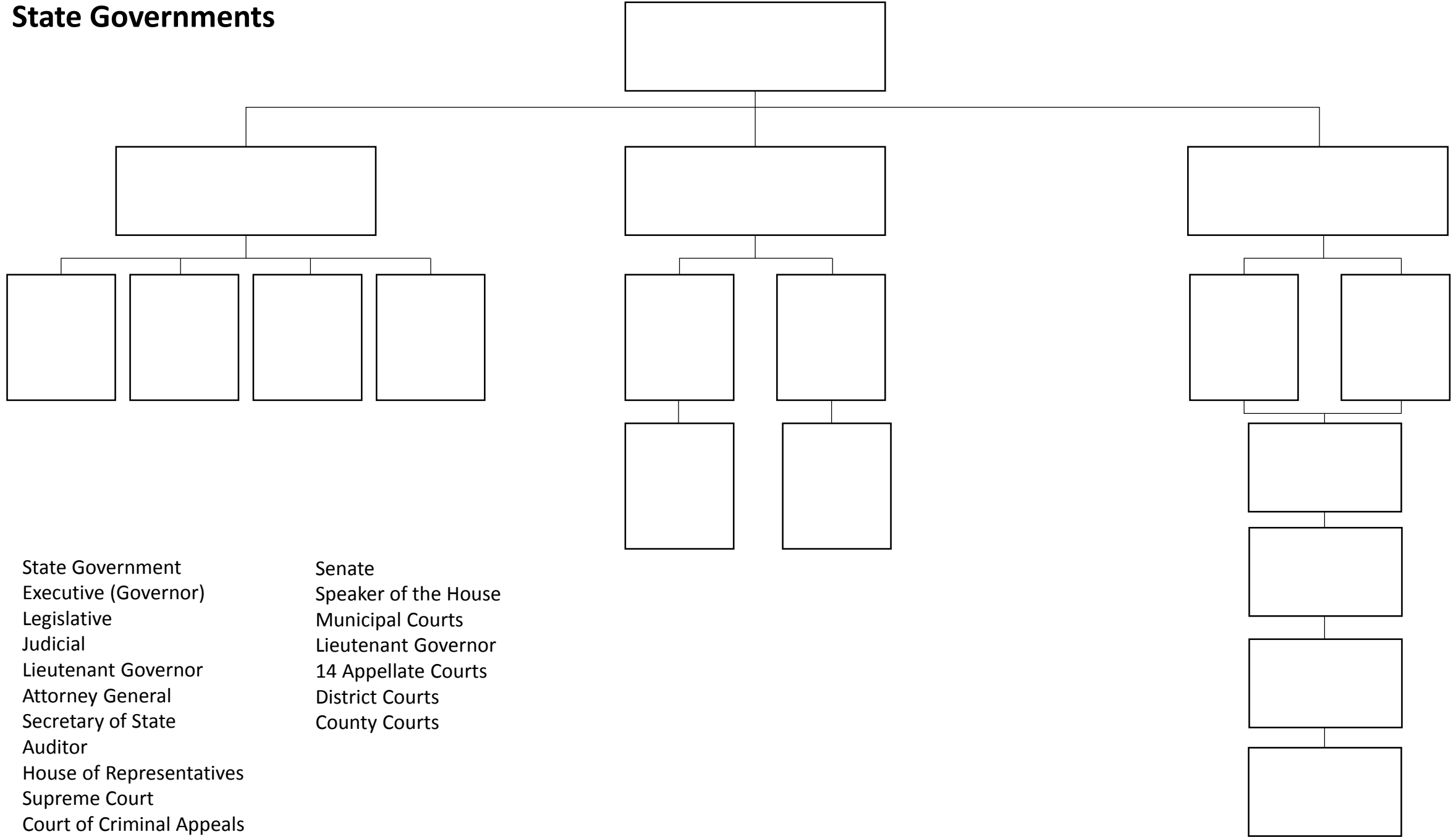
## Weak Mayor:

Mayor  
Council Member  
Council Member  
Council Member  
Council Member

Council Member  
Council Member  
Council Member  
Council Member



# State Governments



State Government  
Executive (Governor)  
Legislative  
Judicial  
Lieutenant Governor  
Attorney General  
Secretary of State  
Auditor  
House of Representatives  
Supreme Court  
Court of Criminal Appeals

Senate  
Speaker of the House  
Municipal Courts  
Lieutenant Governor  
14 Appellate Courts  
District Courts  
County Courts

Read the questions below and answer them using the information regarding the local governments, state government, and the school districts.

1. Which city government is the most popular in Texas?
2. Which city government is mostly found in towns with a population under 5,000?
3. School districts must follow laws passed by whom?
4. How often does the Texas senate and house of representatives meet?
5. How many members are there in the Texas House of Representatives, & how long are their terms?
6. How many members are there in the Texas Senate, & how long are their terms?
7. If you were a “Home Rule” city, which type of city government would you like to have? Why?